

CERTIFICATE OF LOCATION OF GOVERNMENT CORNER

NORTHEAST Corner of Section 6, Township 105, Range 41, 5TH P.M.

STATE OF MINNESOTA, County of MURRAY

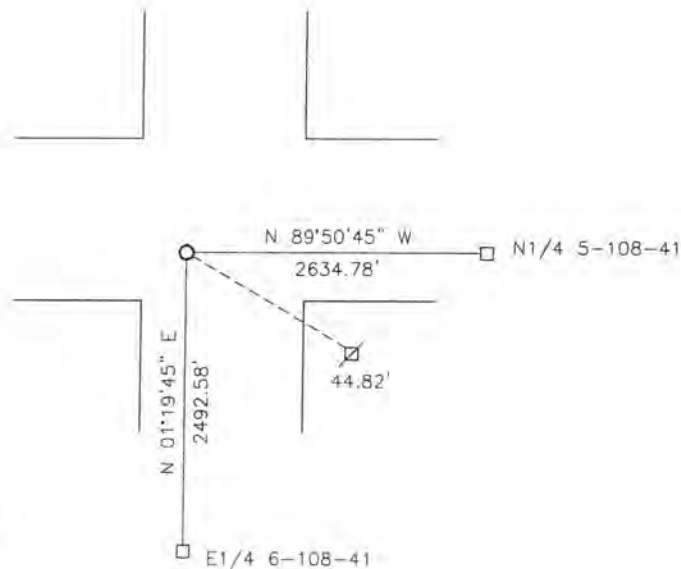
At the corner location shown on the sketch:

On 07-05-2017 found a 1/2" IRON WITH SEAL #16093
DATE

left monument as found, lowered monument, removed monument (explain)

On _____ placed a _____
DATE

SKETCH OF REFERENCE TIES



Minnesota State Plane Coordinate System Murray County Datum NAD83 (1996)

N: 131760.569
E: 490218.390

Nail and bottle cap in utility pole SE 44.82'

Statement of evidence relative to this corner location is on back of page.

I hereby certify that this document and the data contained herein was prepared by me or under my direct supervision.

[Signature] 2/20/18
SIGNATURE DATE

Registration No. 43844

Land Surveyor, Professional Engineer
 County Surveyor, County Engineer

STATE OF MINNESOTA, } ss.
COUNTY OF MURRAY, }

I hereby certify that the within Instrument was filed in this office for record on the 26TH day of MARCH A.D. 20 18 at 9:00 o'clock A. M., and was duly recorded as Document No. _____

[Signature]
County Recorder

Statement of Evidence

In 1861, J.W. Myers did the original survey of the north line of the township.

On November 8, 1902, J.W. Woolstencroft, County Surveyor, recorded a pit and mound with a 2"x2" oak stake at the corner.

In 1987, Bell Surveying, Inc., found a stone over a wood post. They set an 1/2" iron with seal #16093 over the stone.

On July 5, 2017, Bueltel-Moseng Land Surveying found a 1/2" iron with seal #16093 over a stone at the corner.